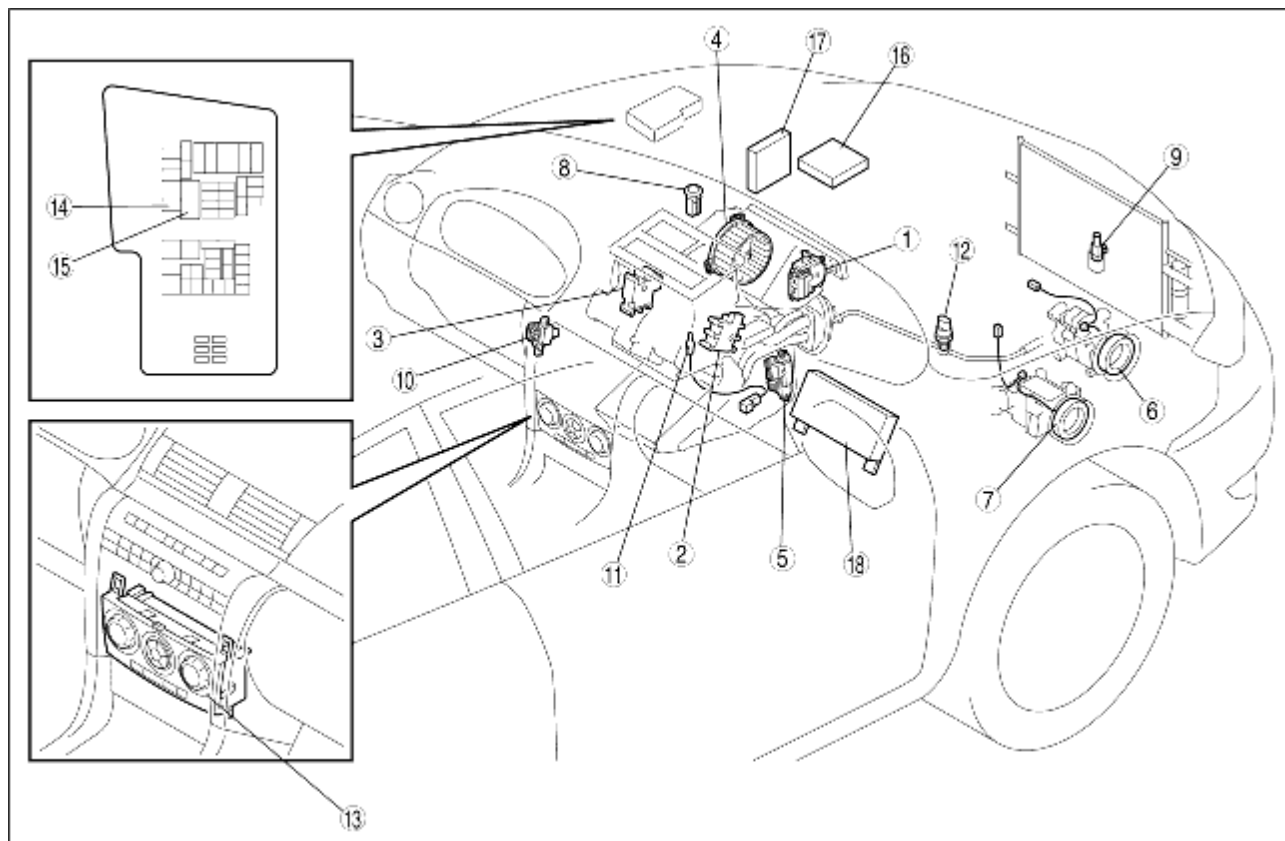


## HVAC CONTROL SYSTEM LOCATION INDEX [FULL-AUTO AIR CONDITIONER]

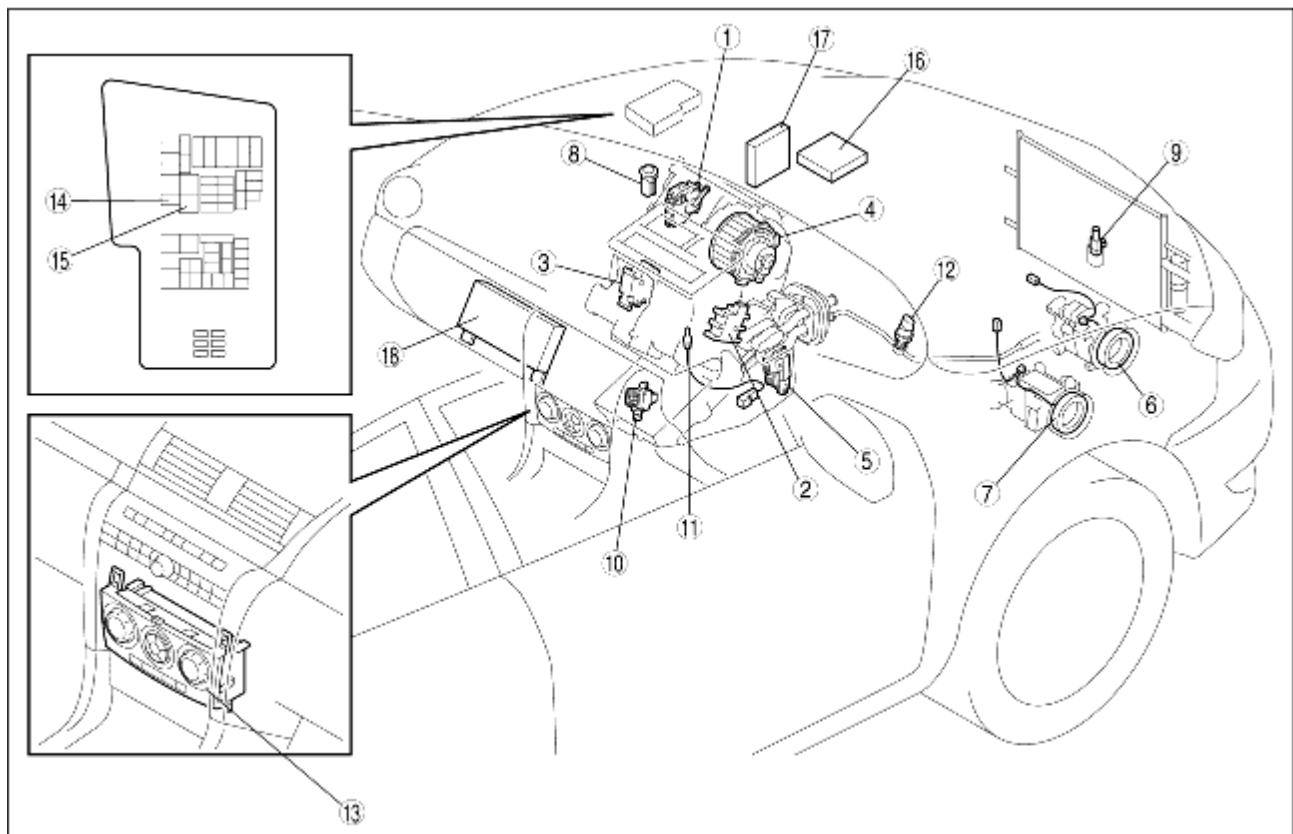
B3E074001042W01

L.H.D.



B3E0740W001

R.H.D.



B3J0740W001

1	Air intake actuator (See <a href="#">AIR INTAKE ACTUATOR REMOVAL/INSTALLATION.</a> ) (See <a href="#">AIR INTAKE ACTUATOR INSPECTION.</a> )
2	Air mix actuator (See <a href="#">AIR MIX ACTUATOR REMOVAL/INSTALLATION.</a> ) (See <a href="#">AIR MIX ACTUATOR INSPECTION.</a> )
3	Airflow mode actuator (See <a href="#">AIRFLOW MODE ACTUATOR REMOVAL/INSTALLATION.</a> ) (See <a href="#">AIRFLOW MODE ACTUATOR INSPECTION.</a> )
4	Blower motor (See <a href="#">BLOWER MOTOR REMOVAL.</a> ) (See <a href="#">BLOWER MOTOR INSTALLATION.</a> ) (See <a href="#">BLOWER MOTOR INSPECTION.</a> )
5	Power MOS FET (See <a href="#">POWER MOS FET REMOVAL/INSTALLATION.</a> ) (See <a href="#">POWER MOS FET INSPECTION.</a> )
6	Magnetic clutch (Z6, ZJ) (See <a href="#">MAGNETIC CLUTCH DISASSEMBLY/ASSEMBLY [Z6, ZJ].</a> ) (See <a href="#">MAGNETIC CLUTCH ADJUSTMENT.</a> ) (See <a href="#">MAGNETIC CLUTCH INSPECTION [Z6, ZJ].</a> )
7	Magnetic clutch (LF) (See <a href="#">MAGNETIC CLUTCH DISASSEMBLY/ASSEMBLY [LF].</a> ) (See <a href="#">MAGNETIC CLUTCH ADJUSTMENT.</a> ) (See <a href="#">MAGNETIC CLUTCH INSPECTION [LF].</a> )
8	Solar radiation sensor (See <a href="#">SOLAR RADIATION SENSOR REMOVAL/INSTALLATION.</a> ) (See <a href="#">SOLAR RADIATION SENSOR INSPECTION.</a> )
9	Ambient temperature sensor (See <a href="#">AMBIENT TEMPERATURE SENSOR REMOVAL/INSTALLATION.</a> )

	(See <a href="#">AMBIENT TEMPERATURE SENSOR INSPECTION.</a> )
10	Cabin temperature sensor (See <a href="#">CABIN TEMPERATURE SENSOR REMOVAL/INSTALLATION.</a> ) (See <a href="#">CABIN TEMPERATURE SENSOR INSPECTION.</a> )
11	Evaporator temperature sensor (See <a href="#">EVAPORATOR TEMPERATURE SENSOR REMOVAL/INSTALLATION.</a> ) (See <a href="#">EVAPORATOR TEMPERATURE SENSOR INSPECTION.</a> )
12	Refrigerant pressure switch (See <a href="#">REFRIGERANT PRESSURE SWITCH REMOVAL/INSTALLATION.</a> ) (See <a href="#">REFRIGERANT PRESSURE SWITCH INSPECTION.</a> )
13	Climate control unit (See <a href="#">CLIMATE CONTROL UNIT REMOVAL/INSTALLATION [FULL-AUTO AIR CONDITIONER].</a> ) (See <a href="#">CLIMATE CONTROL UNIT INSPECTION [FULL-AUTO AIR CONDITIONER].</a> )
14	A/C relay (See <a href="#">RELAY INSPECTION.</a> )
15	Blower relay (See <a href="#">RELAY INSPECTION.</a> )
16	PCM (Z6, ZJ) (See <a href="#">PCM INSPECTION [ZJ, Z6].</a> )
17	PCM (LF) (See <a href="#">PCM INSPECTION [LF].</a> )
18	PJB (See <a href="#">PASSENGER JUNCTION BOX (PJB) REMOVAL/INSTALLATION.</a> ) (See <a href="#">PASSENGER JUNCTION BOX (PJB) INSPECTION.</a> )